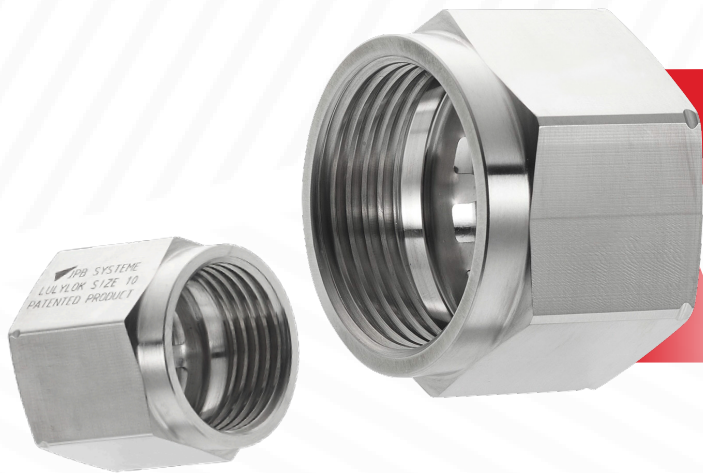


# LULYLOK™

## Self-locking B-Nut



WORLD REFERENCE LOCKING SYSTEM TO **SECURE GAS, FLUID AND PNEUMATIC CONNECTIONS**



## OUR TECHNOLOGY

### SECURES CONNECTIONS WITH NO LOCK-WIRE



Avoids **loosening** or **FOD** : The patented mechanism of LULYLOK™ prevents tension losing in harsh conditions such as vibrations or high temperature.

### SAVES TIME

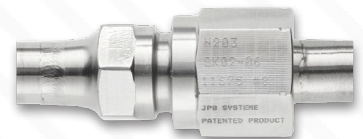


1st installation and maintenance are **5 times** quicker than standard B-Nut using lock-wire. LULYLOK™ installation takes **less than 30 seconds**.

### SAVES WEIGHT



On average, LULYLOK™ is **13% lighter** than standard B-nut for flared design. Up to **750g saved** on an engine fully equipped with LULYLOK™.

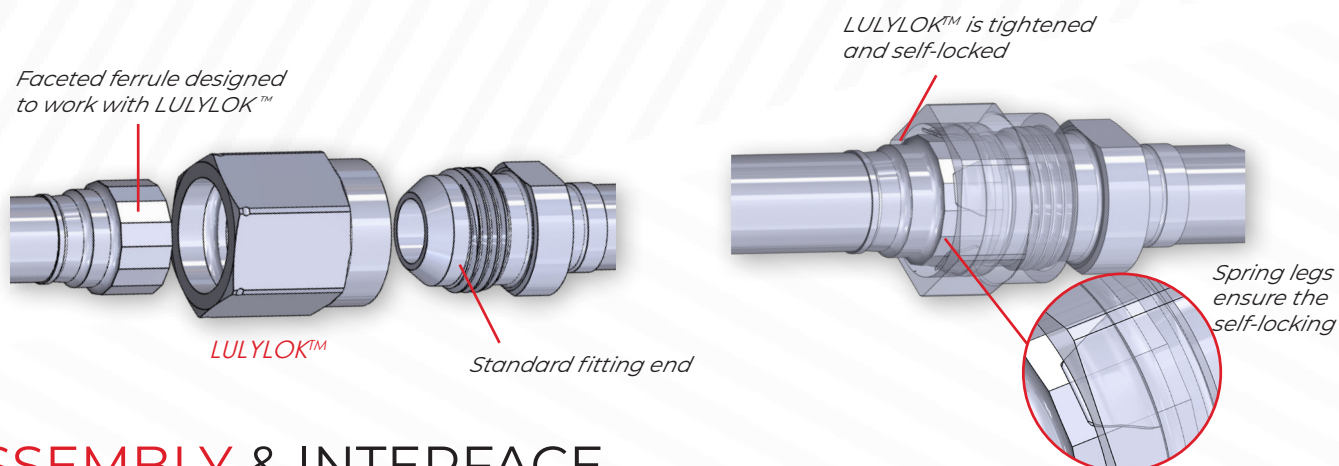


**+ 2.000.000**

pipes **secured** worldwide

## HOW IT WORKS

The self-locking B-Nut LULYLOK™ is equipped with **spring legs** which interact with the ferrule's facettes. Using our patented design, spring legs self-lock on the facettes automatically.



## ASSEMBLY & INTERFACE

- LULYLOK™ is assembled and torqued as a standard B-Nut: **no process modification.**
- LULYLOK™ has the same overall dimensions as standard B-Nut but has less weight.
- LULYLOK™ is built to fit flared and/or flareless interfaces.



## TECHNICAL FEATURES

Size	From <b>-04</b> up to <b>-16</b> // FLARED & FLARELESS
Material & temperature	Stainless Steel 347 (AMS5646) up to <b>450°F (230 °C)</b>
	Inconel 625 (AMS5666) up to <b>900°F (480 °C)</b>
Type	B-Nut fittings with <b>shoulder</b>
	B-Nut fittings with <b>thrust wire</b>
Resistance	Complies with standard specification <b>AS18280</b>
Dimensions	LULYLOK™ overall dimensions comply with <b>AN818 standard</b>
Thread comptability	Thread complies with <b>AS8879</b>
Pressure	<b>3000 PSI</b> maximum

**OUTSIDE STANDARDS?**  
**Ask us!**

**LULYLOK™**  
technology can be  
**rétrofitted**

## REUSABLE & SUSTAINABLE



LULYLOK™ is reusable throughout the **engine lifetime**.  
No replacement: Preservation of **material** and **cost savings**.  
Reliable: **No maintenance required**.



MAXIMUM SAFETY • NO LOCK-WIRE • SAVE TIME • LIGHTER • REUSABLE • SELF-LOCKING • RELIABLE • NO FOD

✉ info@jpb-systeme.com

☎ (+33) 1 64 79 71 20

📍 FRANCE - USA - POLAND

www.jpb-systeme.com

